



Skyinbow Electric Violins
The Workshop
Vidlin
Shetland Isles
ZE2 9QB
Scotland

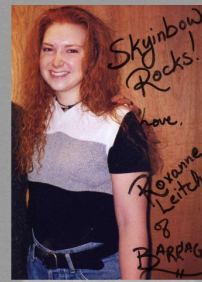
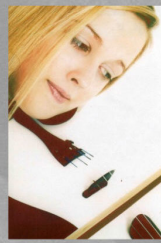
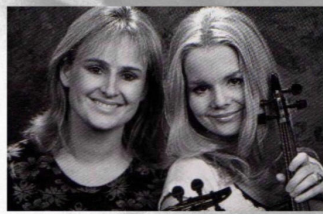
Tel: +44(0)1806 577234
Website: www.skyinbow.com
E-mail: info@skyinbow.com



Pure Acoustic
Transducer Systems

Skyinbow
Violins

Skyinbow



From Top Left, clockwise~

TINA KOGEL~Violinist with exciting German Goth band Chamber~S1T, Pro, PA1
 CORA SMYTH~All Ireland champion who has performed with The Waterboys, Brendan O'Regan, Vinnie Kilduff & MACNAS. Features in Lord of the Dance Show~Pro Active
 MAIREAD NESBITT~Another All-Ireland Champion who has performed with Van Morrison, Sinéad O'Connor, Clannad, Emmylou Harris & Sharon Shannon. Also features in the Lord of the Dance Show~Pro+

PAMELA THOMSON~16 year old Fame Academy winner~S1
 MARK WOOD playing an S1 at Shetland Folk Festival 1997
 ROXANNE LEITCH~Calgary based Canadian fiddler who is a member of Barrage~S1T
 ZOLDAN LANTOS~Hungarian jazz legend~PA1

JEANNI COFFI~Singer/songwriter who takes the lead in her 3-piece avant garde rock sensation, Poor Skeletons~S1, S1T5, S15 Viola, PA1
 CLAIRE WHITE~BBC producer/presenter plus member of Tammies Peerie Angels~PA1
 CRYSTAL PULLMAN~Head tutor of traditional Studies at Van Der Bilt University, Nashville~S1T5, PA1

ELLA HALUK~Talented polish musician~Pro+
 FITTING FINGER BOARDS
 SKY~LA dance performer/musician who has performed with Prince (www.sky13.com)~S1, S1 Octave

INGA WOODS~Talented Shetland player with Da Fustra~PA1
 LUBOS PREPARING FOR FINAL SETUPS
 STEVE THOMAS~U.S. fiddle player with Brooks & Dunn, Hank III, etc~S1
 MARTIN FINISHING S1'S
 CHARLIE MCKERRON~A stalwart of Scottish traditional music and member of Celtic Superbands Capercaillie and Session A9~Pro+, PA1

SKYINBOW NECK PRODUCTION
 PETER GEAR~Innovative fiddler with Shetland band Bongshang~Pro+5 & PA1
 NORA BOESEL~German solo violinist,(www.nora-boesel.de)~S1T5
 EMMA JOHNSTON~Shetland fiddler with Rock, Salt and Nails~Pro Active
 FRAUKE DENNERLEIN~Another talented member of band Chamber~S1T5, Pro, PA1
 DANIELLA BISHOP~Young U.S. player from Ashville North Carolina~S1T5
 RICKIE SIMPKINS~IBMA Album of the Year winner. Also played with Tony Rice Unit, Lonesome River Band & Hooty & the Blow Fish~S1T, PA1

Other Endorsees not shown~

CHRISTIAN HERZBERGER~German session violinist who performs over 200 gigs per year with artists such as Declan O'Rourke, Dave Mendoza and Bonnie Tyler (www.crazyfiddler.com)~S1T5, PA1

RADHAKRISHNA~Indian Violin Star currently performing with Shackti~S1T5, PA1
 MAIRE BREATNACH~Top Irish player who has recorded with U2, The Chieftains, Sinéad O'Connor & Sting and was the fiddle soloist on the original Riverdance~Pro+T5
 GARY MACKEY~Tennessee based fiddler who performs with Dolly Parton, Goosecreek Symphony and Bellamy Brothers~S1T5, PA1

TIM WATSON~Nashville Star of General Jackson Boat Show~S1
 GORDON GUNN~Scottish solo performer plus player with Session A9 & Ruby Rendall~PA1
 NATALIE EIS & KATHARINA KRANICH~Other talented members of German band Chamber~S1 Contrabass, S1 Cello

JENNY SUTHERLAND~Talented Scottish player with National String Ensemble and Scottish Opera~S15, PA1

LORENZA PONZE~American player who has toured with Cheryl Crow~S1

J'ANNA JACOBY~LA based artist who has toured with Rod Stewart~S1T

JOE O'DONNELL~Irish musician who has toured with various bands and played on countless sessions with artists such as Thin Lizzy, Rory Gallagher & Paul Young~S1

MAIRIN FAHY~Talented member of Reeltime and has performed in Riverdance-The New Show~Pro+T

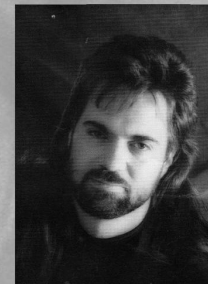
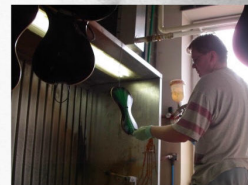
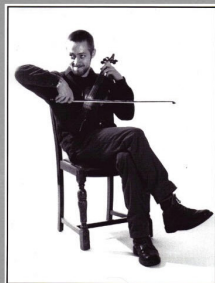
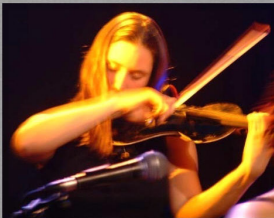
SHARON SHANNON~One of Irelands finest recording artists who has played on numerous compilations & was part of The Waterboys. Has recorded with Kirsty MacColl & Winnie Horan~Pro+T

CHARLIE AUSTIN~Regular performer at the Grand Ole Opry in the 80's, later to become resident fiddle player with Boxcar Willie at his theatre in Missouri. He has performed with Larry Gatlin, Charlie Pride, David Allen Coe, Randy Travis and Ricky Van Shelton~S1, S15T

ARTHUR HOWANSKY~LA based classical violinist who performed at the opening of the Getty Museum in Los Angeles~S1

KERRY NIXON~Guild Hall School of Music student, electronic department~S1T

WILLIAM STREET~This young classical/jazz violinist performs the lead in David Schiffs concerto for electric violin, "The Four Sisters"~Pro Active



Pro Electric Violin

The new battery free Pro has been designed to encompass all of the features of the original Pro Active and the Pro Plus whilst utilising the unique S1 electronic system. This has resulted in an electric violin with exceptionally low to zero bow and background noise whilst retaining the natural acoustic feel of a traditional violin. The new Pro is as light-weight or lighter than your traditional acoustic violin and is available by custom order.



Electro-Acoustic Violin/Viola



Skyinbow have launched a range of electro-acoustic violins/violas which feature Skyinbows Pure Acoustic Pickup System. They have been designed to provide players the opportunity to have affordable, professional amplification. These instruments are in two distinct ranges. Models 26, 28 and 29 are made from European maple & spruce with quality ebony fittings, professionally setup to suit players who require a violin to use in amplified band situations. They are available in colours. Models 4,6 and 8 are handcrafted from quality European timber with superior quality ebony fittings, tuned plates and spirit varnish. These violins are for amplified concert situations.

New Products

Skyinbow Custom Shop now offers a full range of Contrabass, Cello, Octave Violin and Viola. We have developed our Pure Acoustic Pickup System for the Mandolin Family Instruments, Banjo, Cello and Contrabass. We have also developed a system for Classical guitar, Maccaferri guitar, Archtop guitar and Steel string guitar. These items will be released over the following months with updates on our website: www.skyinbow.com

S1 Electric Violin

Skyinbow's award winning S1 electric violins are a tremendously popular, versatile and successful live performance weapon that is suitable for expert and beginner alike.

New for 2007 the improved pickup eradicates bow noise and the battery free active electronics reduce weight considerably adding to an even more natural feel.



www.nora-boesel.de



The S1 is handmade from fine tonewoods - maple neck and back brace with a maple/spruce body. Its unique patented construction achieves a warm, natural resonance whilst maintaining almost no micro-phonic body noise, feedback or wolf notes, even when being used in arduous high volume situations when only back-line amplification is available. The S1 performs equally well in conjunction with effects. With the careful use of compression, the instrument can be overdriven through to distortion. The S1 is as comfortable in the electro-orchestral setting as it is in the country, jazz, folk or heavy rock settings.

The unique battery free pickup system (A.A.M.P) has been designed by Skyinbow with no need for impedance buffer pre-amps. The S1 is available in a wide range of solid and translucent colours and boasts stunning finishes.

TECHNICAL SPECIFICATIONS

Frequency response	20 Hz - 20 KHz	Maximum output voltage	4v peak to peak
Gain	0 dB	THD	Less than 0.05%
Output impedance	1 KOhm	Charging time	60 seconds from 9v battery
		Working time	Up to 16 hours

No external pre-amplifiers required. The pre-amplifier is simply re-charged by plugging a PP3 battery into the jack socket using the lead provided.

Skyinbow

The Skyinbow Pure Acoustic violin/viola active transducer system has been developed by Kenny Johnson to offer string players a new option for the amplification of their instruments. This unique system cleverly combines the noise free active electronics of the Skyinbow S1 with the latest in battery free technology whilst retaining the looks, functionality and, most importantly, the tone of your natural acoustic violin.



Pure Acoustic™

from

Skyinbow

Active
Transducer
System

TECHNICAL SPECIFICATIONS			
Frequency response	20 Hz - 20 KHz	Maximum output voltage	4v peak to peak
Gain	0 dB	THD	Less than 0.05%
Output impedance	1 KOhm	Charging time	60 seconds from 9v battery
		Working time	Up to 16 hours

No external pre-amplifiers required. The specially designed chinrest houses the impedance buffering pre-amplifier, 1/4" jack socket and re-chargeable power supply. The pre-amplifier is simply re-charged by plugging a PP3 battery into the jack socket using the lead provided. Patents applied for.



Skyinbow Ltd,
The workshop,
Vidlin,
Shetland Isles
ZE2 9QB,
Scotland
Tel: +44 (0)1806 577234
info@skyinbow.com
www.skyinbow.com



Some 50 years ago Leo Fender reinvented the guitar. In the past decade Skyinbow have reinvented the violin. Their playability and tone bring pleasure to the player and listener through the full range of musical styles from country to classical and rock and pop to jazz. The dream of a violin capable of amplification has resulted in a range of electric violins which play and sound just like their acoustic ancestors.



Early S1 production at Kirkabister workshop

Alan Clark, Kenny
and John Simpson,
Kirkabister workshop
1997



Early Skyinbow Pro+ 1990



Kenny with Pro violins at
Kirkabister workshop 1995



Davie Jamieson fitting S1 elec-
tronics at new workshop 1998

Here at Skyinbow we have been producing amplified musical instruments from the mid 1980's and electric violins since 1989. We have never stood still and have continued to develop and improve our products. Led by technology and inspired by tradition, to bring you, the musician, new opportunity for your art.

KJ

Kenny Johnson
Managing Director
Skyinbow Electric Violins



New workshop